

BLANKING PLUG

NON-METALLIC Ex e

for General Industrial and Hazardous Area Installations



Features and Benefits

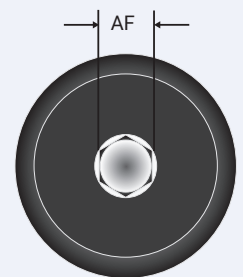
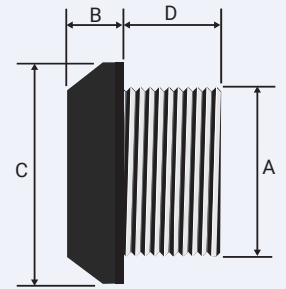
- Precision manufactured from Nylon 6.
- Used to blank off threaded entry holes.
- May be used to blank off an unthreaded entry hole if secured in place with a locknut.

Technical Data

Type:	Non-Metallic Blanking Plug
Plug Material:	Nylon 6
Gasket Material:	HDPE, Nylon

Standards and Certifications

Equipment Protection Levels:	IECEX/INMETRO: Ex eb IIC Gb, Ex ta IIIC Da, Ex nR IIC Gc ATEX/UKEX: II 2G 1D, Ex eb IIC Gb, Ex ta IIIC Da, Ex nR IIC Gc TR CU: 1Ex e IIC Gb X / 2Ex nR IIC Gc X / Ex tb IIIC Db X	
Conformance:	Standard:	Certificate:
IECEX	IEC 60079 Part 0, 1, 7, 15, 31	IECEX CML 16.0062X
ATEX	EN 60079 Parts 0, 7, 31	CML 15ATEX1040X
	EN 60079 Parts 0, 15, 31	CML 15ATEX4095X
UKEX	BS EN 60079 Part 0, 7, 31	CML 21 UKEX 1014X
	BS EN 60079 Part 0, 15, 31	CML 21 UKEX 4016X
INMETRO (Brazil)	ABNT NBR IEC 60079 Parts 0, 7, 31	TUV 15.0485X
	ГОСТ 31610-0, 15, ГОСТ IEC 60079-1	EAЭC RU C-ZA.HA91.B.00244/21
TR CU (Russia)	ГОСТ P MЭК 60079-7, 31	
SANS	SANS/IEC 60079 Part 0, 1, 7, 15, 31	MASC MS/23-9594X
IP66/68 2m - Parallel	IEC 60529	CML15Y728
Deluge Protection	DTS-01	CML 14CA370-2
Marine ABS	IEC 60079 Parts 0, 1, 7, 15, 31, IEC 60529	ABS 20-1952706-1-PDA
	DNV	IEC 60079 Parts 0, 1, 7, IEC 60529
London Underground	BS EN 62444	LU3043, LU3044



FRONT VIEW 'C'



Conditions of Safe Use - X

- The working temperature range is -20°C to +95°C (HDPE) or -20°C to 100°C (Nylon).
- To maintain the IP rating / restricted breathing, the end user shall ensure that the surface of the enclosure against which the sealing gasket seals, is in a good condition.

Installation instructions

- Installation should only be carried out by a competent person using the correct tools.
- Ensure that the thread type and size are compatible with the equipment being installed to.
- Fully tighten all threads.
- Non-metallic blanking plug is not repairable/reuseable.

Product Code	Metric Dimension 'A'	Dimension Max 'B'	Dimension Max 'C'	Dimension Min 'D'	Dimension Max 'A/F'	Install. Torque Value Nm
352720	M20x1.5	7.0	28.0	12.0	10.0	7.0
352725	M25x1.5	7.0	33.0	15.0	10.0	9.0
352732	M32x1.5	7.0	40.0	15.0	10.0	12.0
352740	M40x1.5	7.0	48.0	15.0	14.0	20.0

All dimensions are in mm

CCG reserves the right to make alterations to the technical data, dimensions, designs and products available without notice. The illustrations cannot be considered binding. Please contact CCG for assistance.