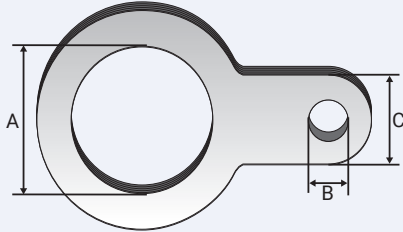


ACCESSORIES

Slip-On Earth Tag

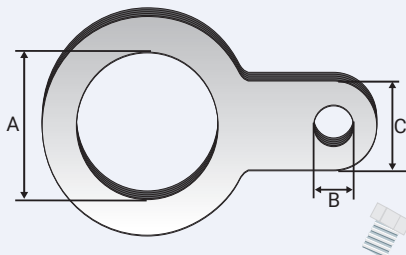
NICKEL PLATED BRASS OR STAINLESS STEEL 316/316L



| Product Code | Size Ref. | Dimension 'A' | Dimension 'B' | Dimension 'C' | Square Section | Short Circuit Fault Current Ratings BS6121 Part 5: 1993 | |
|--------------|-----------|---------------|---------------|---------------|-------------------|---|--------------------|
| 6220-1 | 0/1 | M20 | 7mm | 12mm x 1.5mm | 18mm ² | 20mm | 3.06KA / 1 second |
| 622902 | 2 | M25 | 7mm | 12mm x 1.5mm | 18mm ² | 25mm | 4.00KA / 1 second |
| 622903 | 3 | M32 | 12mm | 22mm x 1.5mm | 33mm ² | 32mm | 5.40KA / 1 second |
| 622904 | 4 | M40 | 12mm | 32mm x 1.5mm | 48mm ² | 40mm | 7.20KA / 1 second |
| 622905 | 5 | M50 | 12mm | 40mm x 1.5mm | 60mm ² | 50mm | 10.40KA / 1 second |
| 622906 | 6 | M63 | 12mm | 40mm x 1.5mm | 60mm ² | 63mm | 10.40KA / 1 second |
| 622907 | 7 | M75 | 12mm | 40mm x 1.5mm | 60mm ² | 75mm | 10.40KA / 1 second |
| 622908 | 8 | M82 | 12mm | 40mm x 1.5mm | 60mm ² | - | - |
| 622909 | 9 | M90 | 12mm | 40mm x 1.5mm | 60mm ² | - | - |

All dimensions are in mm.

Screw-On Earth Tag



| Product Code | Size Ref. | Dimension 'A' | Dimension 'B' | Dimension 'C' | Square Section | Short Circuit Fault Current Ratings BS6121 Part 5: 1993 | |
|--------------|-----------|---------------|---------------|---------------|--------------------|---|-----------------|
| 6030-1 | 0/1 | M20 | M6 | 10mm x 3mm | 30mm ² | 20mm | 26KA / 1 second |
| 603202 | 2 | M25 | M6 | 10mm x 4mm | 40mm ² | 25mm | 26KA / 1 second |
| 603203 | 3 | M32 | M6 | 12mm x 6mm | 70mm ² | 32mm | 26KA / 1 second |
| 603204 | 4 | M40 | M8 | 20mm x 6mm | 120mm ² | 40mm | 26KA / 1 second |
| 603205 | 5 | M50 | M10 | 24mm x 8mm | 185mm ² | 50mm | 43KA / 1 second |
| 603206 | 6 | M63 | M12 | 40mm x 8mm | 300mm ² | 63mm | 43KA / 1 second |
| 603207 | 7 | M75 | M12 | 40mm x 8mm | 300mm ² | 75mm | 43KA / 1 second |
| 603208 | 8 | M82 | M12 | 40mm x 8mm | 300mm ² | - | - |
| 603209 | 9 | M90 | M12 | 40mm x 8mm | 300mm ² | - | - |

All dimensions are in mm.

Sealing Gasket Metric

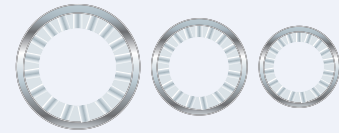


| Product Code | Metric Size | Thickness 'A' |
|--------------|-------------|---------------|
| 805520 | M20 | 2.0 |
| 805525 | M25 | 2.0 |
| 805532 | M32 | 2.0 |
| 805540 | M40 | 2.0 |
| 805550 | M50 | 2.0 |
| 805563 | M63 | 2.0 |
| 805575 | M75 | 2.0 |
| 805580 | M80 | 2.0 |
| 805590 | M90 | 2.0 |

All dimensions are in mm.

Serrated Washer

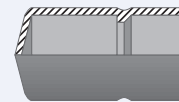
STAINLESS STEEL 316/316L



| Product Code | Metric Size |
|--------------|-------------|
| 805620 | M20 |
| 805625 | M25 |
| 805632 | M32 |
| 805640 | M40 |
| 805650 | M50 |
| 805663 | M63 |
| 805675 | M75 |
| 805680 | M80 |
| 805690 | M90 |

All dimensions are in mm.

Insulation Sleeve



| Product Code | Size Reference |
|--------------|----------------|
| 550502 | 2 |

All dimensions are in mm.

Terminal Connector



| Product Code | Size Ref. | Hole Diameter | Allen Key No. |
|--------------|-----------|---------------|---------------|
| 580302 | 2 | 10mm | 4mm |

All dimensions are in mm.